



ST MICHAELS HOMES LTD

Family-owned and managed

Caring for the elderly and those living with dementia since 1991

Welcome to St Michaels Homes

The company St Michaels Homes Ltd comprises of two elderly care homes which are adjacent to each other Howard Lodge & Dudbrook House. Nestling in beautiful park like gardens in Kelvedon Common on the outskirts of Brentwood, surrounded by beautiful Essex countryside, with abundant wild life, including deer as regular visitors.



St Michaels Homes Ltd is a family run company established in 1991 by the opening of Howard Lodge by it's Founder, Sheila Watson.

Sheila was a trained nurse, midwife and health visitor to the elderly, with this experience of care of residents came from the top down. Sheila was joined by her children Claire in 1992 and Sean in 2012 to continue her vision "To provide excellent quality care of the elderly and those living with dementia."

With the growing needs of the community Dudbrook Hall was opened in 1993. Developments of St Michaels Homes with its two care homes can be seen inside this brochure. We hope to welcome you and your family to the family of St Michaels Care Homes.

Claire Watson, Director added...

"Our main achievement throughout the years since we first open our doors is our dedication to quality care and we have built up a great reputation within the local and wider community for our excellent services this can be reflected in our consistently good CQC reports.

Our loyal staff are the heart & soul of our business. Every member of our staff must care. I don't look at residents as numbers on a balance sheet this is not why I came into this profession I came into this profession because I care about the elderly and I believe good quality care should not be compromised. This has been achieve in both our homes with all the staff we have across the board, and I feel very proud of what has been achieve. I look at all the staff & residents within St Michaels Homes as if they are my family. Our late mother became a resident of Howard Lodge in the last 18 months of her life has left my brother Sean and I with a great foundation to build onto her legacy."

Contents

Welcome to St Michaels Homes	2
Medical and Respite/Short Day Care Placements	3
Howard Lodge	4
Dubbrook House	6
Catering & Hotel Services	8
Admissions & Trial Period	9
Our Staffing Team, Activities and Events	10
Testimonials	11
Directions	12

A house is made of *Wall and Beams...*

A home is made of *Hope and Dreams!*

Medical Care Services

Our residents are offered a relaxed and comfortable home in which their needs, well being and choice are of prime importance. We aim to achieve this by putting our residents at the centre of all decisions about their lives and by encouraging them to exercise their rights in all aspects of their care.

We strive to preserve and maintain the dignity, individuality and privacy of all residents within a warm and caring atmosphere that is both safe and comfortable.

Prior to admission to any of our homes we will make sure we understand your care needs. We will create a personal care plan which is designed around you and will cater for all your care needs. This plan will undergo constant reviews to make sure we are up to date with all your latest care requirements. We encourage family/friends to participate in these reviews to make sure all areas are covered and answer any questions/concerns you might have at the time.

At both our homes we are very fortunate to have good working relationship with our excellent local GP surgery who visit the homes regularly to carry out a weekly service from the homes or as and when required. If you live nearby your own GP may still be available to visit you here otherwise we will arrange for our nearby GP's.

Nursing Care can also be provided from the Community Nurses who provide all Nursing care needs same as if you where in your own home.

Other additional care services that can be catered for:

- Chiropody visits us regularly
- Opticians visits us regularly
- Dental Checks/Treatment as required (Local Dentist)
- Continence Advisors
- A manager/Team leader on call 24x7
- Personal Keyworker in house
- Dietitian Services available
- Pharmacy Prescription delivery

Respite / Short Term Care & Day Care Placements

Placing a parent, spouse or friend into care is never easy, and we fully understand that some people wish to stay in their own homes for as long as possible to do so. This often means a close family member or friend taking the role of main carer. We know how incredibly hard it is to care for someone 24 hours a day 7 days a week

and how exhausting it can be if you don't have support of others.



At St Michaels Homes Ltd we can offer that support with a day placement service, short stay (i.e. for a weekend or week) or respite care, this will give you the carer the peace of mind that your loved one is safe and within a friendly environment where they can enjoy all the same advantages as our residents do however giving you the main carer time to relax and enjoy time away from your care duties without worry.

Also if you have any planned or unplanned hospital operations / surgery's and require help and assistance during your recovery, please don't hesitate to contact us and we will do our upmost to help you back on your feet.

In summary St Michaels Homes can provide care in the following areas:

- Old Age
- Dementia
- Physical disability
- Sensory impairment
- Residential
- Respite
- Day Placement Centre
- Pallative Care
- End of Life Care

The list above is not exhaustive of all care categories.

Please call us on 01277 372095

Option 4 for further information.

Howard Lodge

Beacon Hill Road
Kelvedon Common
Brentwood, Essex
CM14 5FQ

Accommodation & Facilities

- Build completed September 2014
- 74 bedrooms all with wetroom/en-suites
- 4 Hamlets providing Residential & Dementia Care
- Each Hamlet having its own Lounge and Dining Rooms to create a smaller, friendly atmosphere
- Surrounded with 3 acres of grounds/gardens
- Sun terraces within each hamlet overlooking gardens
- Large Roof Garden Terrace
- Activity Rooms
- Cinema Room
- Miss Phoebe's Tea Room
- Community Venue
- Smaller more Private Lounges
- Laundry & Housekeeping
- Wide range of activities seven days a week by our activities team
- Great events and day trips out
- Broadband within all rooms
- Sky TV available within all rooms
- 24-hour Nurse Call System within all rooms
- Top to Toe hairdressing salon
- Pampering Suite/Treatment Room



Dudbrook House

Dudbrook Road
Kelvedon Common
Brentwood, Essex
CM14 5TQ

Accommodation & Facilities

- Started Build in 2022 and opened on October 2023 by St Michaels Homes Ltd
- 73 bedrooms all with en-suites (wet rooms)
- Two assisted bathrooms
- Provides residential and dementia care
- Has two main visiting lounges (Snug and Orangery)
- 24- Hour Nurse Call System
- Central heating throughout
- Housekeeping & Laundry Services
- TV Points in all bedrooms, option of having own landline can be arranged
- Sheila's Salon (hairdressers and nail bar, offering washes, sets, perms, cuts & blow-dry)
- Sensory Room (used by activities team)
- Resident Lift
- Disabled Minibus Service
- Wheelchair access throughout the home and the gardens
- Extensive Park like garden with beautiful countryside views
- London Themed 'Forget me not' Dementia Garden
- Larger bedrooms so we can accommodate couples living together
- Activity Rooms





Dudbrook House

We moved into our newly built Dudbrook House in October 2023 from the older care home Dudbrook Hall. Our new home provides all the modern facilities you would expect with the feeling of a warm & homely atmosphere.

The home has been designed over two floors with providing elderly frail care downstairs and upstairs providing care for those living with dementia. Each floor is self-contained with their own restaurants, lounges and staff members.

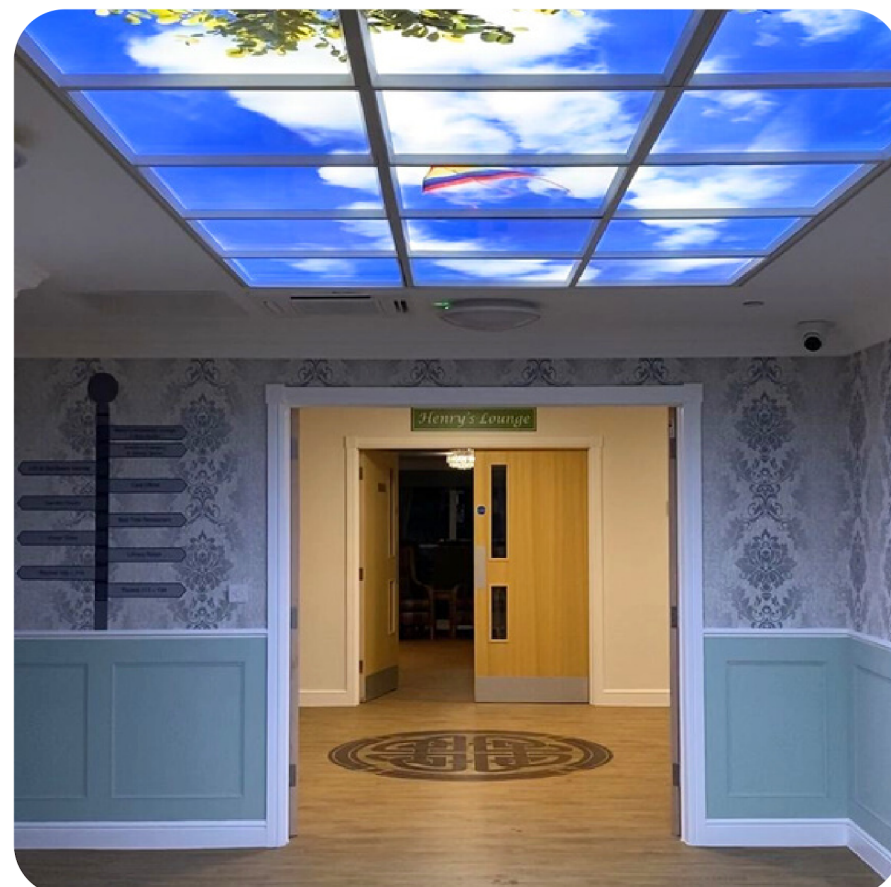
With its slow pace of country living our new building is positioned in the centre of nature's beauty, making it a home away from home country side retreat.

Conveniently our home is located only a 10 minutes drive between Ongar & Brentwood Town Centres, allowing easy and quick access for any amenities that may be needed.

Sean Watson, Director at the grand opening said...

"We are thrilled that the home is now open and that all our hard work has come to fruition. It has taken well over 4 years in planning & a year for the construction work to complete but the new facility is excellent and exactly as we had hoped and dreamt off."

"Our commitment of care to our residents has remained our utmost priority and their response to the new facility has been fantastic. The new home with all its space and countryside living is the perfect retirement retreat for all to enjoy. We hope you enjoy our new home and make this your own home."



Catering Services

Apetito who are part of the Wiltshire Farm Ltd Group specialise in providing excellent quality foods for the health care section and have done so for St Michaels Homes Ltd for many years. With this we can be certain that our food quality is of an excellent standard every time and the risk of contamination of food is greatly reduced.

Menu boards are located near the entrance of all our dining rooms offering three options at every meal time along with other alternatives. We are also able to cater for any dietary/specialist requirements.



Our residents participate in choosing our menus and provide us with feedback on the food quality to make sure we are providing the highest quality and food choice.

Meal times:

Breakfast - 8:00am onwards

Lunch - 12:30pm / 1:30pm

Supper - 5:30pm

Hot & Cold beverages and light snacks are available 24 hours a day.

Hotel Services

Within both homes we have a housekeeping team and Housekeeper manager who will undertake all the cleaning services within the home each day.

We provide a full laundry service, we ask that all items of clothing where possible be machine washable and clearly labelled so items of clothes will not get lost. All rooms are decorated & maintained to a high standard by our maintenance team.

Our aim is to make our home yours so we encourage you to bring your own homely possessions for example chair, pictures, ornaments etc.

Within all the bedrooms we can provide standard single bed, wardrobe, bedside cabinet with lockable storage facility. We also have if required hoists, commodes, hospital beds, wheelchairs and many other medical equipment at your disposal. Also within all rooms we have a nurse call system which can either be operated via press button or wireless device to call for assistance 24/7.

Also we have pressure mats/door monitors which are linked to the nurse call system which can detect if someone is out of bed.

We appreciate that at times it may be difficult to attend all planned hospital / dentist appointments, we have a disabled minibus which is able to offer transport facilities for all resident and if required we can arrange staff escort, however these additional services will involve an extra charge.



Admission Process

Prior to all admissions to our homes we will need to make sure we can cater for your care needs. This will be done by us either attending your home, other care home facility, Hospital, or preferably you will come to see us and look around our facilities.

From this meeting we will discuss your care needs and from that we can show you what care category you come under and rooms which we have available along with associated prices. We would encourage family or friends to be present at this meeting, should you have a family member or friend who has power of attorney of your financial affairs than those people would need to be present also. Should you not have anyone else to be present at this meeting we can arrange for an independent advocate from Age Concern to be present.

Once you are happy to proceed and all administration works are complete we will arrange a moving date. We will do all the paperwork with GP's, community nurses etc.

Financial Matters

The funding for social care can be daunting and complex. We can provide advice & guidance on these matters. Please call us on 01277 372095 (Option 4) should you have any questions.

All residents will be asked to sign an agreement which will include terms and conditions regarding your tenancy. With this it will clearly state your accommodation charge which covers to the cost of full board service i.e. your room, heating, lighting, all foods & beverages, 24hr personal care and laundry facilities.

Items which are not covered under your fees are;

- Hairdressing
- Dry cleaning
- Newspapers
- Private telephone in bedrooms
- Personal Clothing
- Any electrical appliances (TV)
- Labelling of Personal Clothing
- Transportation & Taxis
- Toilet requisites
- Cost of staff escorting resident to any given appointment
- Dental & Optical Services
- Sky TV within bedrooms
- Chiropody Services
- Profile/Hospital beds

Trial Period

We understand that leaving your home with all its good memories is going to be difficult, and moving anywhere different is not going to be easy, so we offer a trial period for all our residents who join us to sample our care and home facilities. This gives us both an opportunity to see whether firstly and most importantly our home is the right place for you and your family, secondly gives the home a chance to see how we can meet your care aspirations.

Within a few weeks and once you are settled in we will then conduct a review to ascertain the following;

- Assess your needs are being met, how you have settled in
- Monitor your progress & any changes required
- Find out if you wish to become permanent resident
- Plan for the future

We would encourage family/friends to be present during these reviews. Please feel free to discuss with the manager or care team at any time if you have any concerns.

We will do our utmost to make your stay with us a contented and happy time. We love to see family and friends come to visit and welcome them all to our homes.

We can also provide our dining rooms in between meal times for special occasions. In Howard Lodge we have larger function rooms which can be hired for private functions should you require more space. We always celebrate birthdays & anniversaries.



Our Staffing Teams

At St Michaels Homes Ltd we believe that our staff are the heart and soul of our company and with good selection and training being a key component in being able to offer and deliver excellent quality person centred care. Over the years we have built up a good team of staff many of whom have been with us for many years some have been with us since we opened our doors in 1991.

All our staff undergoes thorough, ongoing training to ensure that we can offer a excellent level of care, which we consider to be far in excess of that required by the industry regulators.

We operate a full schedule of training via our in house, fully qualified training Manager. This gives all of our staff the opportunity to self-develop and grow with the company. This allows our home to meet, and indeed exceed, the National Minimum Standards when related to staff training.

The majority of our staff are qualified to NQ/QCF 2 or above Standard. Other training topics completed by St Michaels Homes staff includes:

- Moving and Handling/Positioning
- First Aid
- Infection Control
- Dementia Awareness
- Food Hygiene
- Palliative Care
- Continence Assistance
- Health and Safety
- Medication Administration
- Safe Handling of Medicines
- Managing Challenging behaviours
- Safeguarding of vulnerable adults
- Mental Capacity Act & Deprivation of Liberty Safeguards
- COSHH
- Fire Safety
- End of Life Care and many more

Staffing ratio to residents depend on residents care needs, the more care needs that are required the more staffing will be deployed.

Awards:

- Leadership & Management Awards
- National Training & Development Awards
- Lifetime Achievement Award to Sheila Watson
- Proposer Awards

Following admission you will be allocated a dedicated personal key worker who will work towards fully understanding your requirements and become a friendly familiar face. The key workers role is to assist and encourage you to continue your links with families, friends, leisure pursuits, activities and personal grooming.

Your key worker will also communicate your needs and wishes to the care team on your behalf. life books play an important factor in understanding our resident looking at who, what and where they came from this will all be completed by the key worker.

Activities & Events

At both the homes we employ a team of full time activity coordinators, they organise daily activities & events for example:

- Intergenerational baby & toddler play groups sessions with the residents
- Fetes, Bazaars
- Social Evenings & Entertainment
- Themed Nights/Days (Halloween, St Georges & St Patricks Days, Christmas Parties, Birthdays & Anniversaries etc)
- Day trips to the seaside, Nuclear bunker, Ongar steam railway, Garden Centres, Local Country Pub and many more
- Activities within the home like arts & crafts, chair exercises, card and board games, indoor bowling, quizzes, bingo, sing-a-longs, reminiscence sessions and many more
- Senior Citizen Lunch Club

It's up to you if you wish to be involved as little or as much as you like, we welcome family and friends to also come along and join us on these great events and enjoy the fun. Have a look at our Facebook Page: St Michaels Homes Ltd for clearly updated videos and photos of all our activities.



Testimonials

Don't take our word for it look up both our homes under carehome.co.uk where you will see all our reviews

Best Decision Made

My auntie has only been in Dudbrook House for just a few days but she could not have been made more welcome. Her circumstances changed from fully independent living in her own home to bed bound in a matter of days so this could have proved very emotional. However, this care facility is a really beautiful home full of character, smiles and genuine warmth and patience. Very quickly, I have met so many staff who have stopped and had a lovely conversation and been genuinely engaging and not too busy to spend time with me or my aunt.

The Tribute Show the other afternoon was just such a nice event; respectful and gentle on the ears with the performer asking if everyone was happy with the volume right from the start. The staff really tried hard to involve everyone who wanted to be there and check if they were ok throughout. Well done Team Dudbrook; your facilities are very unique and the hard work and dedication have not gone unnoticed.

- Annette W (Niece of Resident)

Staffs are like extended family

Mum has been a resident of Honeysuckle Hamlet for almost 2 years. She has a diagnosis of mixed dementia. It is so lovely at Howard Lodge Care Centre. Although I was Mum's full-time carer it was getting too much for me and I was always stressed and unwell. The staff at the home all love Mum as if she is part of their family and this makes us all be able to relax and not worry. Now I feel better and can enjoy visits to Mum in the tea rooms or take her out. She loves coming home to spend time with family but we all know that Howard Lodge Care Centre is the best place for her. She will be 90 years old next year and looking forward to celebrating with the people who love her and that includes her Howard Lodge family. Thank you.

- Audrey C (Daughter of Resident)

Strongly Recommended

Staff are always friendly and attentive but never invasive. Nothing is too much trouble and will always accommodate the needs of their residents and relatives and visitors. Entertainment is always varied and is catered for each individual's needs which is relevant to my friend's needs as she is nonverbal but likes to participate in these activities. My friend is always clean and very well looked after. Staff are always on hand to assist if she needs anything done and is always approachable any time of day.

- K M (Friend of Resident)

Great Care Home

Quite simply, everyone at Howard Lodge Care Centre goes above and beyond in caring for my dad. The staff are all so caring and friendly, we couldn't ask for more. Nothing is too much trouble, and they do everything possible to keep Dad comfortable.

- Tracey S (Daughter of Resident)



Directors Claire, Sheila and Sean



ST MICHAELS HOMES LTD

Family-owned and managed

Caring for the elderly and those
living with dementia since 1991

Contact Us



01277 372095 (Option 4)



8.30 am - 4.30 pm, 7 days a week



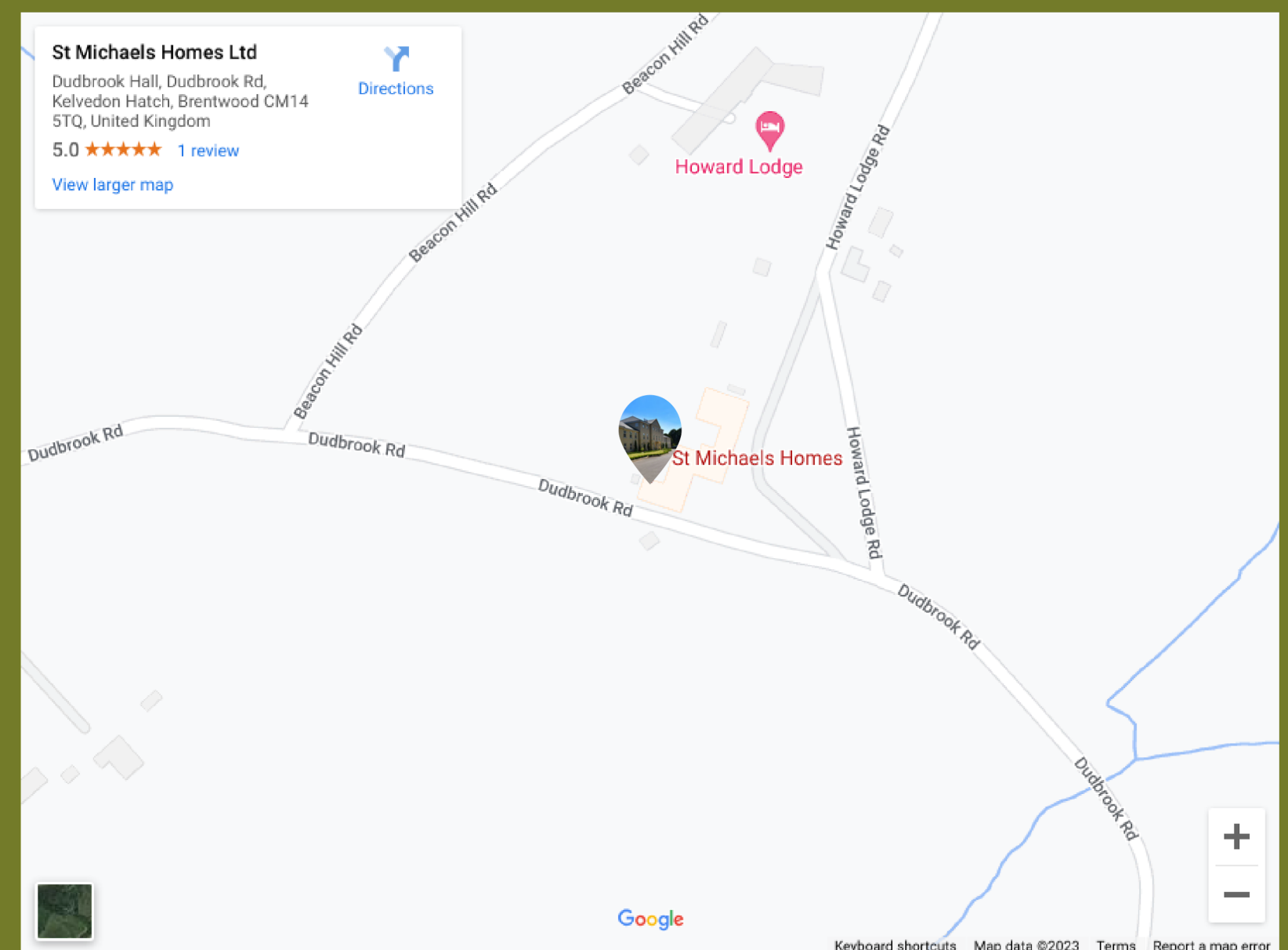
www.stmichaelshomesltd.com



enquiries@stmichaelshomesltd.com



www.facebook.com/stmichaelshomesltd



Our homes are situated, 4.5 miles from Brentwood & Ongar,
off the A12, 8.7 miles from Romford and 10 miles from Chelmsford
Please call to arrange a viewing.